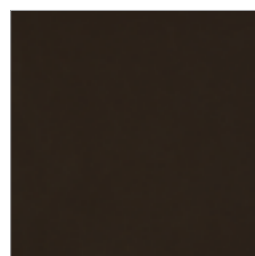


## FINITURE STRUTTURA / STRUCTURE FINISHES

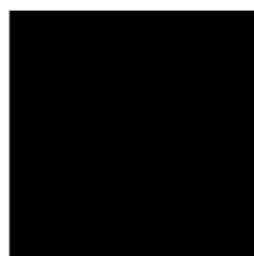
### Verniciato epossidico | Epoxy varnished



**0G** ghisa  
cast iron



**06** bianco opaco  
matt white



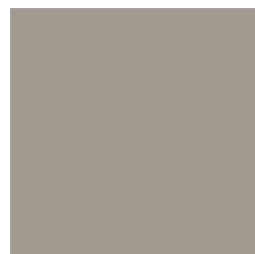
**07** nero opaco  
matt black



**15** grigio grafite opaco  
matt grey graphit



**18** grigio silver  
silver grey



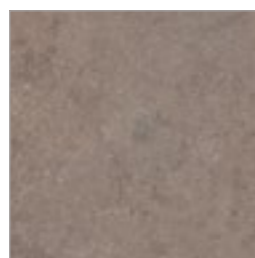
**22** tortora  
dove grey

## FINITURE PIANO / TOP FINISHES

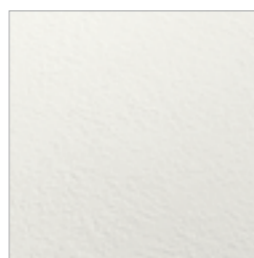
### Laminato | Laminated



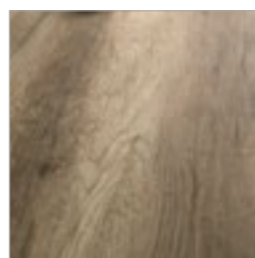
**L3** porfido nero  
black porphyry



**L4** porfido tabacco  
tobacco porphyry

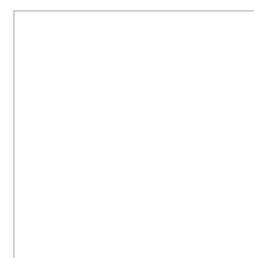


**L6** bianco pietra  
white stone



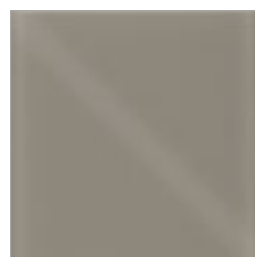
**L8** rovere anticato  
vintage oak

### HPL | HPL

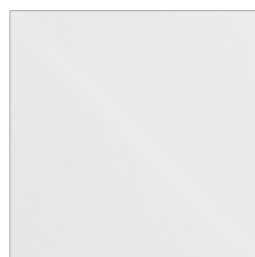


**S1/88** bianco opaco  
finitura superficiale 88  
matt white  
finish surface 88

### Vetro temperato | Tempered glass

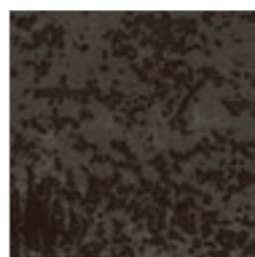


**6A** tortora  
dove grey

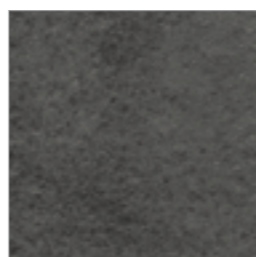


**67** extrabianco opaco  
matt extrawhite

### Ceramica | Ceramic

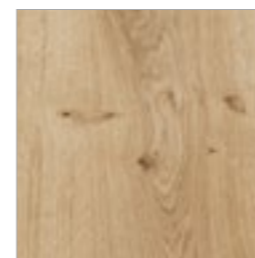


**K1** oxide



**K3** pietra di savoia

## Legno | Wood



**31** rovere naturale  
natural oak



**34** rovere cotto  
burnished oak



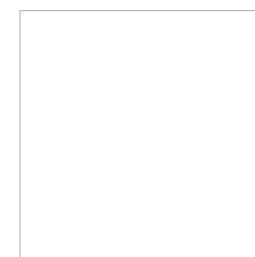
**37** rovere grafite  
graphit oak

## FINITURE GAMBE / LEGS FINISHES

### Verniciato epossidico | Epoxy varnished



**0G** ghisa  
cast iron



**06** bianco opaco  
matt white



**07** nero opaco  
matt black



**15** grigio grafite opaco  
matt grey graphit



**18** grigio silver  
silver grey



**22** tortora  
dove grey

## Legno | Wood



**31** rovere naturale  
natural oak



**34** rovere cotto  
burnished oak

I colori dei vetri, del cuoio, del legno, dei metalli e dei laccati sono indicativi. Si precisa che la stampa su carta è una rappresentazione della realtà e la visione dei materiali e dei colori non può corrispondere perfettamente al prodotto finito. Inoltre si declina ogni responsabilità per richieste di accoppiamento, in quanto è tecnicamente impossibile mantenere la costanza di tono nel tempo.